

Cynomolgus CD3E&CD3D/CD3 epsilon&CD3 delta Protein

Cat. No. CD3-CM201

Description

Source	Recombinant Cynomolgus CD3E&CD3D/CD3 epsilon&CD3 delta Protein is expressed from HEK293 with hFc tag at the C-Terminus. It contains Gln22-Asp117(CD3E)&Phe22-Ala105(CD3D).
Accession	Q95LI5.2(CD3E)&Q95LI8(CD3D)
Molecular Weight	The protein has a predicted MW of 36.9 kDa (CD3E) and 35.4 kDa (CD3D). Due to glycosylation, the protein migrates to 58-62 kDa (CD3E) and 44-46 kDa (CD3D) based on Tris-Bis PAGE result.
Endotoxin	Less than 1EU per µg by the LAL method.
Purity	> 95% as determined by Tris-Bis PAGE > 95% as determined by HPLC

Formulation and Storage

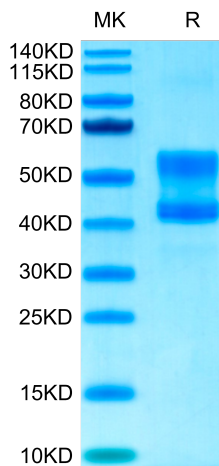
Formulation	Lyophilized from 0.22µm filtered solution in PBS (pH 7.4). Normally 8% trehalose is added as protectant before lyophilization.
Reconstitution	Centrifuge the tube before opening. Reconstituting to a concentration more than 100 µg/ml is recommended. Dissolve the lyophilized protein in distilled water.
Storage	-20 to -80°C for 12 months as supplied from date of receipt. -20 to -80°C for 3-6 months in unopened state after reconstitution. 2-8°C for 2-7 days after reconstitution. Recommend to aliquot the protein into smaller quantities for optimal storage. Please minimize freeze-thaw cycles.

Background

T-cell surface glycoprotein CD3 epsilon&CD3 delta chain, also known as CD3E & CD3D, are single-pass type I membrane proteins. When antigen presenting cells (APCs) activate T-cell receptor (TCR), TCR-mediated signals are transmitted across the cell membrane by the CD3 chains CD3D, CD3E, CD3G and CD3Z. All CD3 chains contain immunoreceptor tyrosine-based activation motifs (ITAMs) in their cytoplasmic domain.

Assay Data

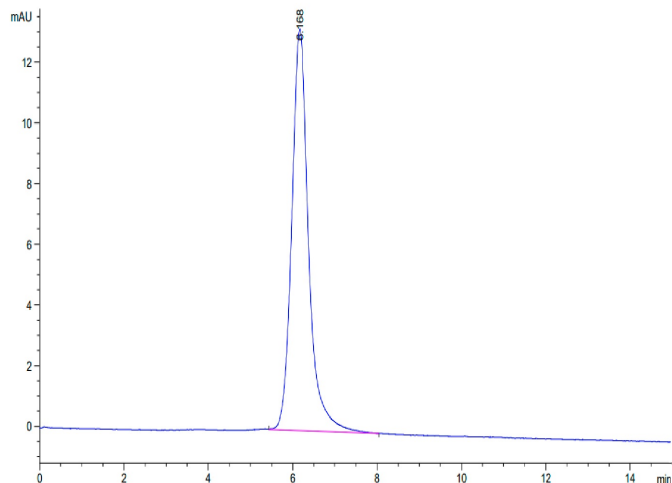
Tris-Bis PAGE



Cynomolgus CD3E&CD3D on Tris-Bis PAGE under reduced conditions. The purity is greater than 95%.

SEC-HPLC

Assay Data

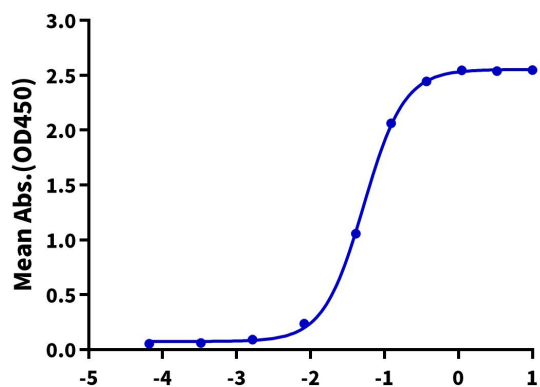


The purity of Cynomolgus CD3E&CD3D was greater than 95% as determined by SEC-HPLC.

ELISA Data

Cynomolgus CD3E&CD3D, hFc Tag ELISA

0.05µg Cynomolgus CD3E&CD3D, hFc Tag Per Well



Immobilized Cynomolgus CD3E&CD3D, hFc Tag at 0.5µg/ml (100µl/Well). Dose response curve for Biotinylated Anti-CD3E&CD3D Antibody, mFc Tag with EC50 of 52.6ng/ml determined by ELISA.